

# 1850SJ

ULTRA SERIES BOOM LIFT



## Performance

Platform Height	185 ft 7 in.	56.56 m
Horizontal Outreach	80 ft	24.38 m
Below Ground Reach	4 ft 10 in.	1.47 m
Swing	360° Continuous	
Platform Capacity-Restricted	1,000 lb	454 kg
Platform Capacity-Unrestricted	500 lb	227 kg
Platform Rotator	173° Hydraulic	
Jib Length	13–20 ft	3.96–6.1 m
Jib Range of Articulation	120° (+75, -45)	
Weight <sup>1</sup>	59,930 lb	27,184 kg
Max. Ground Bearing Pressure	119.6 psi	8.41 kg/cm <sup>2</sup>
Drive Speed	2.8 mph	4.5 km/h
Gradeability	40%	
Turning Radius (Inside)		
Axles Retracted	23 ft 4 in.	7.12 m
Axles Extended	7 ft 7 in.	2.3 m
Turning Radius (Outside)		
Axles Retracted	31 ft 3 in.	9.52 m
Axles Extended	21 ft 8 in.	6.6 m

1. Certain options or country standards increase weight.

## Standard Specifications

### Power Source

Diesel Engine		
Deutz TCD 3.6L Tier IV Final	99.8 hp	74.4 kW
Fuel Tank Capacity	52.8 gal	200 L

### Hydraulic System

• Hydraulic Tank Capacity	75.1 gal	284.2 L
---------------------------	----------	---------

### Tires

• Standard	445/50D710 24 ply Foam-Filled
------------	-------------------------------

## Standard Features

- Platform 36 x 96 in. (.91 x 2.44 m) Side Entry
- Selectable Capacity Envelope
- Drive-Out Extendable Axles
- 173° Hydraulic Platform Rotator
- AC Receptacle in Platform
- Tilt Light and Alarm
- Swing-Out Engine Tray
- 12V-DC Auxiliary Power
- Hourmeter
- Control ADE® System
- Full-Time 4WD
- 3 Selectable Steering Modes
- Proportional Controls
- Gull-Wing Steel Hoods
- 445/50D710 Foam-Filled Rim Protector Lug Tread Tires
- Platform Console Machine Status Light Panel\*
- Lifting/Tie Down Lugs
- Engine Distress Warning/Shutdown—Selectable via JLG Analyzer
- All Motion Alarm
- Glow Plugs
- LCD Panel at Operator's Platform Control Console

\* Provides indicator lights at platform control console for system distress, fuel level, low fuel, 5 degree tilt light, foot switch status and SkyPower® Package 2.



- **Heightened Productivity**—The 1850SJ is much faster to full height, so operators can spend more time working and less time positioning the boom. The axles take approximately one minute to extend or retract. They're able to pivot in and out and do not telescope like extendable axles on other Ultra Series boom lifts.
- **Greater Work Envelope**—Telescoping jib and five section boom provides over 2.9 million cubic feet of work area and greater ability to reach up and over. An LCD screen shows operators where they are in the work envelope along with other useful information.
- **More Capacity**—Featuring dual 1,000 lb/500 lb, the 1850SJ is the most powerful boom in the industry. Plus, the operator can move just the jib, rather than the whole boom, for greater maneuverability and more precise positioning.
- **Ease of Transport**—No oversized load permit needed (over weight permit is required for highway transportation).

## Accessories & Options

- 36 x 72 in. (.91 x 1.83 m) Platform
- Inward Self-Closing Swing Gate
- Fall Arrest Platform 36 x 96 in. (.91 x 2.44 m) Rear Entry<sup>5</sup>
- Mesh to Top Rail-Bolt-on Aluminum 6 ft<sup>5</sup>
- Mesh to Top Rail-Bolt-on Aluminum 8 ft<sup>5</sup>
- Light Package<sup>1</sup>
- Soft Touch System
- Cold Weather Start Kit<sup>2</sup>
- Hostile Environment Kit<sup>3</sup>
- Flashing Amber Beacon
- Cold Package Plus<sup>4</sup>
- Tool Tray
- Special Hydraulic Oils
- Accessory Packages:
  - SkyWelder® Package 2
  - Nite Bright® Package 2
  - SkyGlazier®
  - SkyCutter®
  - Pipe Rack

1. Includes platform mounted worklights and drive/backup lights.

2. Includes battery heater and oil tank heater.

3. Includes console cover, boom wipers and cylinder bellows.

4. Includes extreme cold engine oil, fuel conditioner, engine block heater, battery blanket, glow plugs, hydraulic tank heater, and oversized footswitch. Arctic hydraulic oil priced separately.

5. Not available in all markets.

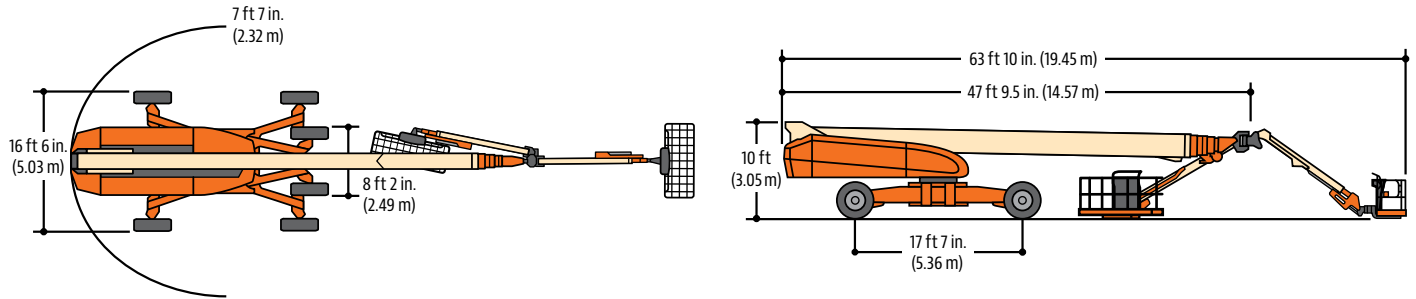
# 1850SJ

ULTRA SERIES BOOM LIFT



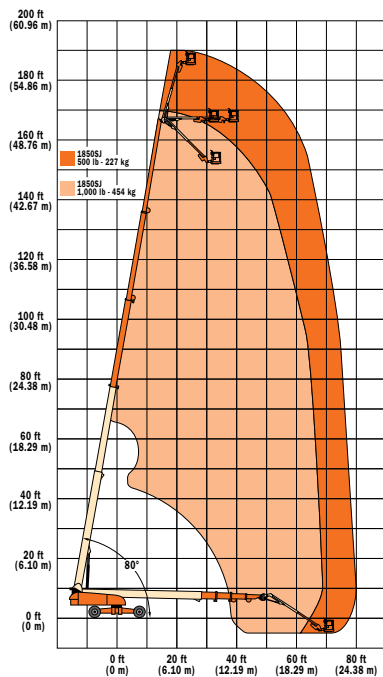
## Dimensions

All dimensions are approximate.



## Reach Diagram

### 1850SJ



## The JLG "1 & 5" Warranty

JLG Industries, Inc. backs its products with its exclusive "1 & 5" Warranty. We provide coverage on all products for one (1) full year, and cover all specified major structural components for five (5) years. Due to continuous product improvements, we reserve the right to make specification and/or equipment changes without prior notification. This machine meets or exceeds applicable OSHA Regulations in 29 CFR 1910.67, 29 CFR 1926.453, ANSI A92.5-2006, and CSA Standard CAN3-B354.2-M82, as originally manufactured for intended applications.

Part No.: 3131030  
R10150 3  
Printed in USA



**JLG Industries, Inc.**  
1 JLG Drive  
McConnellsburg, PA 17233-9533  
Telephone 717-485-5161  
Toll-free in US 877-JLG-LIFT  
Fax 717-485-6417  
[www.jlg.com](http://www.jlg.com)

**An Oshkosh Corporation Company**